



6TH ANNUAL SOUTH CAROLINA **Health Equity Summit**

***FORCES FOR CHANGE: EMPOWERED
COMMUNITIES, SHARED CULTURES.***

APRIL 12, 2024



ABOUT THE ALLIANCE FOR A HEALTHIER SC

The Alliance for a Healthier South Carolina's mission is to convene and connect diverse stakeholders to align and catalyze efforts to improve health and well-being for communities across South Carolina. Learn more: www.healthiersc.org.

Take the Health Equity Pledge



WE OFFER CONTINUING EDUCATION CREDIT

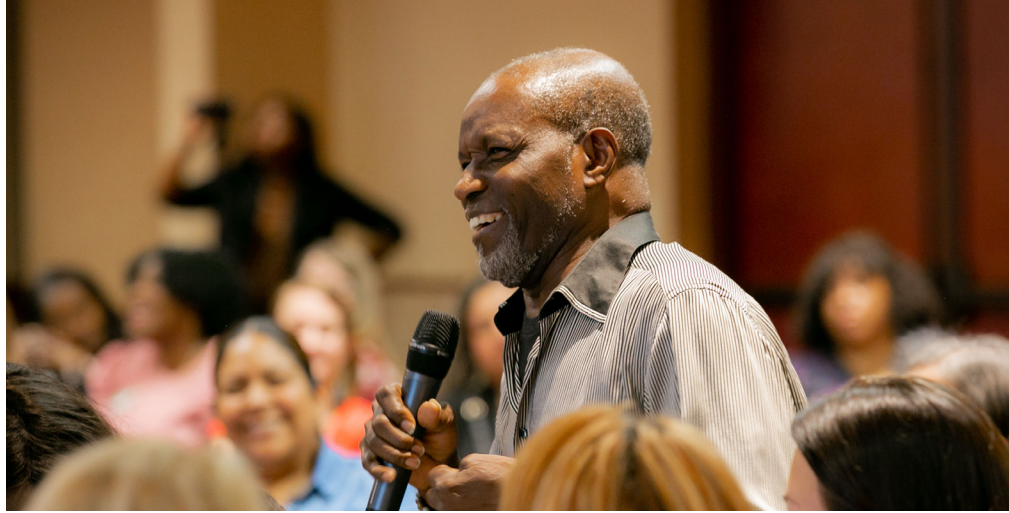
Social Work

SCDHEC is approved by the SC Board of Social Work Examiners as a provider of continuing education hours for social workers. SCDHEC is a supporter of The SC Health Equity Summit and the Alliance for a Healthier South Carolina. The Social Work credits have been approved; participants will receive 3.25 CEUs.

Health Education

SCDHEC Office of Community Engagement is a designated provider of continuing education contact hours (CECH) through the National Commission for Health Education Credentialing, Inc. This program is designated for Certified Health Education Specialists (CHES) and Master Certified Health Education Specialists (MCHES) to receive up to 3.5 total hours of Category I entry or advanced-level CECHs in health education.





HOTEL MAP

The main program will be held in the Congaree A&B.

The breakouts will be held in:

Richland - A. Collaborative Solutions for Health Equity

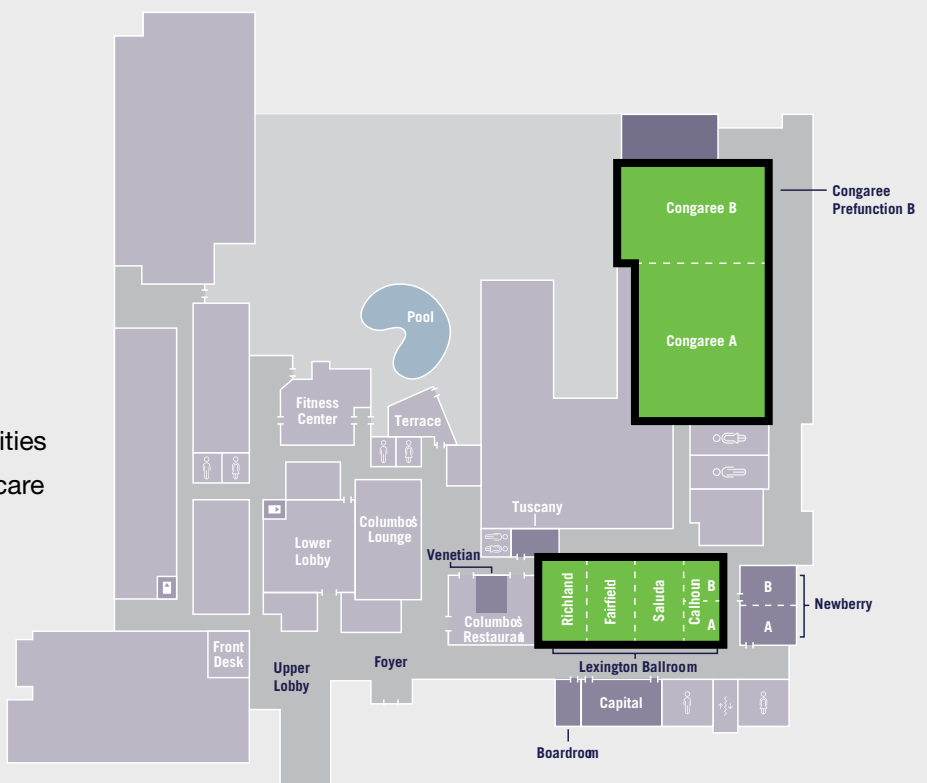
Fairfield - B. Forces for Change: Innovative Approaches to Equity

Saluda - C. Cultivating Thriving Communities

Calhoun - D. Diversity & Equity in Healthcare

Floor Map Key

- Health Equity Summit
- Meeting / Conference Rooms
- Foyer Space
- Amenities / Service Areas
- Elevators



AGENDA AT A GLANCE

8:00am

REGISTRATION

9:00am

WELCOME & OPENING REMARKS

9:15am

KEYNOTE PLENARY

Giving South Carolina a Fighting Chance at Health Equity

Anthony A. Dicks, Jr.,
Senior Leadership Consultant, 180 Management Group

10:15am

BREAK

10:30am

BREAKOUT SESSIONS #1

A. Collaborative Solutions for Health Equity

We Need the Boys Back in Town: A Movement to Increase Men into the Ranks of Community Health Workers

Mike Young, MA, CHW
Health Equity Consultant, Everyday Life Consulting

Rebekah Shilling, MS, CHW
Program Manager, SC Community Health Worker Association

**B. Forces for Change:
Innovative Approaches to Equity**

Behavioral Health Resource Integration into the Business Community

Dean Hybl
Executive Director at Ten at the Top

Jessica Seel, MPH
Director of Behavioral Health Initiatives & Workforce,
South Carolina Office of Rural Health

C. Cultivating Thriving Communities

Reimagining Thriving Communities Through Meaningful Community Engagement to Advance Health Equity

Kim Rawlinson, CHW
Community Impact Manager, Center for Community Health Alignment, University of South Carolina

LaShandra Morgan, Ph. D
Outreach Director, Healthy Me Healthy SC, MUSC

D. Diversity and Equity in Healthcare

The Constellation Regional Learning Collaborative (CRLC): An Alternative Approach to Hypertension Control

Jametta Magwood-Golston, Ph.D, MPH
Health Equity Specialist, Constellation Quality Health

11:15am

BREAK

11:30am

HEALTH EQUITY AWARDS LUNCHEON

The Health Equity Circle of Champions Award
The Vince Ford Health Equity Award

1:00pm

BREAKOUT SESSIONS #2

A. Collaborative Solutions for Health Equity

First Five South Carolina: Transforming Family Access to Services

Rachal Hatton-Moore

Two-Generation Systems Manager, South Carolina First Steps

B. Forces for Change: Innovative Approaches to Equity

Equity-Driven Workplace Wellness; Uniting for a Healthier South Carolina

Ashley McCall, LMSW & Crystal Williams, LCSW

Williams and McCall Consulting

C. Cultivating Thriving Communities

Building Bridges: Bringing Communities and Healthcare Together.

Stacey Seipel, MSN, RN

Director, Value Based Care Coordination, MUSC

Rita Aidoo, LMSW

Manager, Community Navigation, MUSC

D. Diversity and Equity in Healthcare

Turning Up the HEAT: Physicians Leading Health Equity Initiative in Seven Rural Counties

Cyndi New, MBA, BSN, RN-ACM

Director of Community Health and Health Equity, Self Regional Healthcare

Jimmell R. Felder, MD

Health Equity Advisory Taskforce Lead, Self Regional Healthcare

1:45pm

BREAK

2:00pm

BREAKOUT SESSIONS #3

A. Collaborative Solutions for Health Equity

Bridging Health Equity: A Collaborative Approach to Promoting Community Health & Access for the Uninsured

Elijah Melendez

Director of Development, North Charleston Dental Outreach

Joseph Powe, DHA, MHA

Program Director, Roper St. Francis Healthcare, Greer Transition Clinic

B. Forces for Change: Innovative Approaches to Equity

Workplace Transformation Through RBA lens

Meg Stanley

Executive Director, Wholespire

Mary Jones, Ph.D, MPH

Director of Workforce Development, Adjunct Faculty Professor, University of South Carolina

C. Cultivating Thriving Communities

Building Sustainable Partnerships in HIV/AIDS Prevention and Care Through the Lens of Social Work Practice in the Lowcountry of South Carolina

Shanna Hastie, LMSW

Preventive Health Social Worker, SC DHEC

D. Diversity and Equity in Healthcare

Understanding and Combating Medical Ableism in the Healthcare Setting

Mandy Halloran

Director of Public Health & Disability Integration, Able SC

Dori Tempio

Senior Director of Community Education, Able SC

2:45pm

BREAK

3:00pm

CLOSING PLENARY

Bridging Public Health with Policy & Action

Aditi Bussells, PhD, MPH

Councilwoman, At-Large, City of Columbia

3:20pm

CLOSING

MEET OUR SPEAKERS



Marisette Hasan
Chair, Alliance for a Healthier SC

Marisette Hasan, Principal & CEO of LifeSprings Consulting Group, LLC, chairs the Alliance for a Healthier SC and its Health Equity Action Team. She is a Program Coordinator for The SC Coalition for the Care of the Seriously Ill, overseeing the My Life My Choices advance care planning initiative. Hasan serves as VP for Community Action & Policy at CTAC and is a Community Co-investigator for African American Faith Advance Care Planning Research.



Monty Robertson, MHA
Executive Director, Alliance for a Healthier South Carolina

Monty serves as the Executive Director of the Alliance for a Healthier South Carolina. Handling the operations of this state-wide coalition, Monty is charged with creating and expanding strong relationships with partners to ensure the Alliance's mission to improve the health and well-being of South Carolina is carried out.



Anthony A. Dicks, Jr., MBA

Anthony A. Dicks, Jr. is a leader's leader! His passion for leadership development is seen through his work with emerging leaders across a multitude of industries. He has spent over two decades preparing people with diverse responsibilities to reach their optimal leadership potential. He firmly believes that leaders are not developed by accident, they must be engineered.



Aditi Bussells, PhD, MPH

Dr. Aditi Bussells currently serves as a Councilwoman for the Columbia City Council. She is also a seasoned management consultant, who prioritizes health equity and public health in her work. With expertise spanning policy, non-profit, and industry sectors, she focuses on child health, risk behavior prevention, and adverse childhood experiences. As Chair of the Health, Social, and Environmental Affairs Committee, she drives initiatives to create more equitable and inclusive societies. Recognized for her dedication, she has been honored by Columbia Business Monthly, The State Newspaper, and the Honorary Jim Clyburn for her impactful contributions to health equity research.



Rita Aidoo, LMSW

Rita Aidoo serves as the Manager of Community Navigation under the Population Health Program at the Medical University of South Carolina. Her focus is on high risk, high utilizer patients to address Social Determinants of Health needs. Rita also oversees MUSC's Coastal Connections referral platform and Community Health Worker program. With almost 10 years of Social Work experience, she is passionate about helping address health equity and health disparities while building strong relationships with community-based organizations.



Jimmell R. Felder, MD

Dr. Jimmell Felder holds a Bachelor of Science from Duke University and a medical degree from the MUSC. Her pediatric residency was completed at East Carolina Brody School of Medicine. Board certified in pediatrics and obesity medicine, she also holds a Diversity and Inclusion certificate from AAMC. Recently, she attained an MBA from the University of Tennessee. After 16 years of practicing pediatrics, she retired to join Absolute Total Care as Medical Director of Medical Affairs. Dr. Felder also spearheads the Health Equity Advisory Taskforce for Self-Regional Healthcare and launched her own medical weight management practice, New Creation Wellness, LLC.



Mandy Halloran

As Director of Public Health & Disability Integration at Able SC, Mandy Halloran ensures equitable access for people with disabilities through program evaluation and development. Leading the SC Disability Partners in Disaster Planning Coalition and SC Disability Public Health Task Force, she champions inclusion & accessibility for all. She showcased Able SC's Barrier-free Vaccine Clinic model at the White House 2022 COVID-19 Equity Showcase. A graduate of the University of South Carolina, SC Diversity Leaders Institute, and a founding member of SC Women in Leadership, Mandy serves on numerous boards & councils to increase disability integration in the Public Health setting.



Shanna Hastie, LMSW

Shanna Hastie is the Preventative Health Social Worker (STD/HIV/Viral Hepatitis) Division with SC DHEC-Lowcountry. In this role, she serves as a subject-matter expert and liaison for persons at-risk for HIV/AIDS, persons living with HIV/AIDS and education focused on risk reduction of STIs in South Carolina. She is a strong proponent of community-engagement has been instrumental in her involvement of Fast-Track Cities-Charleston, ReConnect Us, Prison Advisory Board, Ending the Epidemics SC, SC HIV Planning Committee, World AIDS Day, and the past President of SHAPE-Tricounty. She continues to use her voice on national and global stages to promote health equity.



Rachal Hatton-Moore

Rachal Hatton-Moore is South Carolina's inaugural Two-Generation Coordinator. As the Two-Generation Coordinator at the SC Early Childhood Advisory Council, her role is to support and advance efforts to align agencies, policies, and delivery systems in support of whole family practice. She serves as the project manager for First Five SC. The Two-Generation Approach is a powerful tool in creating efficiencies, centering families, and improving outcomes for families. Her background involves over a decade of work in developing programs and managing projects that elevate the voices and lived experiences of families through human-centered design.



Dean Hybl

Since becoming the first full-time Executive Director of the organization in 2010, Dean Hybl has helped Ten at the Top establish a strong track-record for developing connections, fostering collaboration, and building regional capacity across communities and stakeholder groups. He is a past recipient of the Welling Award for Regional Collaboration, Upstate Forever's Land Planning & Policy Champion Award and the Urban League of the Upstate's Corporate Citizen Award. In November 2023, Hybl was recognized by SCBIZ Magazine as one of the 50 Most Influential Business Leaders in South Carolina.



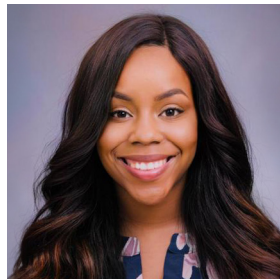
Mary Jones, Ph.D, MPH

Dr. Mary Jones currently serves as the Director of Workforce Development and Adjunct Faculty at the University of South Carolina Arnold School of Public Health in the Department of Health Promotion Education and Behavior. Dr. Jones is a US Air Force Veteran and serves her community in multiple capacities. She has worked specifically on minority health research over the last 13 years. Her research and public health experiences include obesity, diabetes, and heart disease prevention, community engagement and organizing, nutrition, health policy, program evaluation, and health equity.



Jametta Magwood-Golston, Ph.D, MPH

Dr. Jametta Magwood-Golston has focused on public health and health disparities for over 10 years. Her research interests include rural population health, cancer, and social determinants of health. Jametta earned her Ph.D. and Master of Public Health from the University of South Carolina. While at the University, she primarily worked and trained at the Institute for Partnerships to Eliminate Health Disparities and at the South Carolina College of Pharmacy. These two experiences led to her strengthened understanding of the correlation between medication and population health and the critical need for community-based research and using research as a tool.



Ashley McCall, LMSW

Ashley McCall is a Licensed Master Social Worker with a passion for transforming lives and making a positive impact. Over the past 10 years, she has immersed herself in medical and mental health settings, working with diverse populations and witnessing the incredible power of compassion and support. She brings a wealth of expertise in health and well-being to the corporate world. She serves as a dedicated corporate wellness consultant, partnering with organizations to foster well-being in their workplace culture.



Elijah Melendez

Elijah Melendez was born in Tampa, Florida and earned a scholarship to attend The Citadel, the Military College of South Carolina. Inspired by his faith, he took an opportunity to give back to disadvantaged communities like those he grew up in, first as a teacher, then in the nonprofit sector. Elijah now serves as the Director of Development for the North Charleston Dental Outreach - a charity dental clinic providing basic dental care to low-income, uninsured patients. He and his wife have two boys under 2 and live in Charleston.



LaShandra Morgan, Ph.D

Dr. LaShandra N. Morgan is the Project Director of Breathe Easy SC, manager of the Tri-County Health Network at MUSC Health-Orangeburg, and Outreach Director for Health Me-Healthy SC. Her work primarily focuses on using community voice to achieve health equity through results-based accountability. In addition to giving rise to community voice, Dr. Morgan serves as a voice for the community by communicating on their behalf in various coalitions. She believes the best ways to achieve health equity are through “meaningful” community engagement, trust building, power-sharing, and collaboration.



Cyndi New MBA, BSN, RN-ACM

Cyndi New, currently serving as Self Regional's Director of Community Health & Health Equity, brings a wealth of experience from her dynamic 20-year career in healthcare. With a Bachelor's in Nursing from Lander University and a Master's in Business Administration from Anderson University, she has effectively blended her medical expertise with a strong business acumen. With certifications in Diversity, Equity, and Inclusion (DEI) and Results Based Accountability, New is dedicated to implementing comprehensive healthcare programs that prioritize health equity, social determinants of health, and community well-being, fostering healthier and more inclusive communities.



Joseph Powe, DHA, MHA

Dr. Joseph Powe has over eight years of experience in the healthcare and is currently the Program Director of the Roper St. Francis – Greer Transitions Clinic. His area of expertise is revenue, operations, and most importantly DEI. He is responsible for providing community outreach and overseeing the clinic's efforts to serve the uninsured within the tri-county region. Dr. Powe was born and raised in Harlem, New York, and lives in Summerville, SC. He is a graduate of Trident Technical College, Charleston Southern University, Webster University and holds a Doctor of Health Administration from the Medical University of South Carolina.



Kim Rawlinson, CHW

Kim Rawlinson serves as the Community Impact Manager with the Center for Community Health Alignment (CCHA), University of South Carolina. As a Community Health Worker (CHW), she has over ten years of experience in health disparity reduction by fostering community outreach and engagement in underserved and rural communities in South Carolina. Additionally, she has experience in academic and community-based partnerships, research, and project management & implementation. At CCHA, Kim leads the Equity Through Meaningful Community Engagement initiative and provides support to organizations through CHW capacity-building efforts. She recently coordinated a research project centered around meaningful community engagement led by CHWs.



Jessica Seel, MPH

Jessica Seel is the Director of Behavioral Health Initiatives & Workforce Development at the South Carolina Office of Rural Health (SCORH). Jessica leads SCORH's efforts to eliminate barriers to mental healthcare and reduce the stigma surrounding mental illness and substance use within rural communities. This work includes suicide prevention programs, and collaborations to address substance use disorder (SUD) and opioid use disorder (OUD). Jessica is the program lead on the Developing Recovery-Supportive Employment in the Appalachian Mountain Region of SC.



Stacey Seipel, MSN, RN

Stacey Seipel serves as the Director of Value Based Care Coordination in MUSC's Population Health Department. Working with a team of talented Nurse Care Coordinators and Social Workers, she utilizes her 16 years of experience in clinical care, education, quality, and patient safety to support Population Health initiatives aimed at improving care coordination to promote health, decrease healthcare disparities, and improve outcomes.



Rebekah Shilling, MS, CHW

Rebekah Shilling serves as a Program Manager at the South Carolina Community Health Worker Association overseeing the ABO Rural Health Initiative and the National Men’s Community Health Worker Alliance. She has combined all this knowledge with a passion for helping families and communities thrive.



Meg Stanley

Meg Stanley leads Wholespire in its efforts to provide proven and sustainable approaches to increase access to healthy choices for all people. As executive director Meg oversees operations, including strategic planning, grant management, fund development, advocacy campaigns, community and youth engagement, and project implementation while ensuring the values of Wholespire are incorporated throughout all the organization’s work.



Dori Tempio

Dori Tempio believes that everyone can work together to unlock barriers and create positive change in the community! It’s never more evident as she networks in the community in her role as the Senior Director of Community Education for Able SC. She actively works to build connections with a variety of community agencies as well as state and federal entities to provide resources and tools. Dori is responsible for coordinating trainings, webinars, and community events that emphasize the importance of individuals with disabilities being included. Dori graduated from Johns Hopkins University with an MS in Counseling.



Crystal Williams, LCSW

Crystal Williams is a dedicated Wellness Consultant committed to transforming lives on both personal and corporate levels. She brings a wealth of knowledge and experience to the world of holistic health and wellbeing. Whether working with individuals seeking a healthier lifestyle or collaborating with businesses to foster happier and productive work environments, she is a trusted partner in the journey towards wellness. She specializes in creating customized wellness programs, promoting mindfulness, and enhancing overall health and vitality. With a deep passion for improving the lives of those she works with, she is dedicated to making wellness accessible and achievable for all.



Mike Young, MA, CHW

Mike Young is a Community Health Worker, Cultural Anthropologist, Health and Racial Equity Consultant/DEI, and CHW Training Specialist at Everyday Life Consulting, whose team brings vast experience that focuses on building individual, organizational, and community capacity to address social determinants of health through clinical-community linkages and CHW sustainability, a screaming word artist, published poet, storyteller, and self-described “recovering academic”. Previously, Mike was the Director of Equity, Diversity and Inclusion at the Center for Community Health Alignment and PASOs under the Arnold School of Public Health at USC. Mike regularly gets invited by state and national entities to speak on diversity.

THANK YOU TO OUR SPONSORS

TITLE SPONSORS

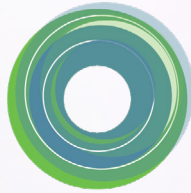


PREMIER SPONSORS



SUPPORTER SPONSORS





**ALLIANCE FOR A HEALTHIER
SOUTH CAROLINA**

CONVENE. CONNECT. CATALYZE.

WWW.HEALTHIERSC.ORG

[@HEALTHIERSC](https://www.instagram.com/HEALTHIERSC)

