



CONVENE. CONNECT. CATALYZE.

2022 ANNUAL REPORT





Shawn Stinson, MD FACP
Chair, Alliance for a Healthier SC

A Message from the Chair

Coming off of the recent Live Healthy SC meeting I believe that there is an energy across South Carolina that is palpable. The energy is around the State Needs Assessment and the recognition that understanding the details of where our neighbors across SC are falling short of living their healthiest lives is the first step in developing the plans to address them. The energy comes from the sharing of stories of how programs underway are already making a difference in improving health equity. The energy comes from a recognition that we are soon going to be in a position to align our

resources and efforts to make meaningful strides in moving the needle in a meaningful way on our state health ranking. Being a member of the Alliance for a Healthier SC matters. As the Needs Assessment is completed and the work to craft the State Health Improvement Plan begins, YOUR voice is important. Your passion is important.

As members of the Alliance recently participated in DHEC's data walk the challenges we face were quantitated for all to see. It was almost overwhelming. What was great though, was to be able to talk with the incredibly bright and dedicated data scientists and analysts who presented these challenges...to dig in deeper to gain an understanding of the differences across communities and populations. It was inspiring to be among leaders representing our healthcare providers, community based organizations, the business community, payers, and policy makers who were earnestly digging in deep so that they can bring their expertise to the next steps of the process. Your passion is evident and intense.

Great work is being done across our state, but more is needed. Our work with DHEC over the upcoming months to identify areas of alignment is needed to amplify the impact of current and future efforts. Let's take full advantage of what we as members of the Alliance have joined to do: convene, connect, and catalyze. Your passion is the key to making significant and measurable progress toward our Vision: A South Carolina with optimal and equitable health for ALL.



2022-2023 LEADERSHIP TEAM

Schipp Ames

Vice President SC Hospital Association

Chris Collins

Associate Director, Health Care
The Duke Endowment

Jordan Dasai

Chief of Quality, SC Department of Health
& Human Services

Melissa Fair

Community Action Director,
Furman University IACH

Elizabeth Fletcher

Senior Vice President, Strategy &
Business Development, Spartanburg
Regional Healthcare System

Vince Ford

Senior Vice President, Community Affairs,
Prisma Health

Marisette Hasan

President & CEO, The Carolinas Center

Thornton Kirby

President & CEO,
SC Hospital Association

Naomi Lett

President & CEO,
United Way Association of SC

Darlene Lynch

Senior Director of Community Health
Transformation SC Office of Rural Health

Maya Pack

Executive Director SC Institute of
Medicine & Public Health

Tricia Richardson

CEO, SC Thrive

Kathy Schwarting

CEO, Palmetto Care Connection

Juana Slade

Chief Diversity Officer, AnMed Health

Shawn Stinson, MD

Senior Vice President, Healthcare
Innovation & Improvement, BlueCross
BlueShield of SC

Richele Taylor

CEO, SC Medical Association

Brannon Traxler, MD

Director of Public Health, SC Department
of Health & Environmental Control

In 2022 these member organizations focused efforts around Live Healthy South Carolina and Health Equity to catalyze health improvement and equity work at the state and community level to improve health and well-being for ALL.

VISION

A South Carolina with optimal and equitable health for ALL.

MISSION

Convene and connect diverse stakeholders to align and catalyze efforts to improve health and well-being for communities across SC.

CONVENE

CONNECT

CATALYZE

4th Annual Health Equity Summit (March 23, 2022)

This summit engaged approximately 150 participants in conversations and activities to better understand of what creates health equity. The Alliance serves as the lead convener for Health Equity and works to connect and align state and community efforts.

7th Annual Population Health Summit (August 24, 2022)

150 participants attended this interactive half-day event. The Population Health Summit promotes working through a health equity lens to mobilize people for collective action. This event continues to showcase innovative and integrated strategies to make the case for partnerships between state and community organizations and advocate to advance population health and health equity.

5th Live Healthy South Carolina (November 1, 2022)

The 5th Annual Live Healthy South Carolina Meeting on November 1, 2022 at the Columbia Metropolitan Convention Center reached over 200 participants. This event showcased community efforts and recognized those working to improve the health and well-being of South Carolina.

Take Action Tuesdays (2nd Tuesdays Monthly)

Take Action Tuesdays (TAT) aligns with National Observances and the Live Healthy SC priorities to recognize programs, projects, and best practices that exemplify the highest level of commitment to improving the health and well-being. These 1-hour webinars showcase work related to the State Health Improvement Plan. The Alliance hosted 10 TAT Alliance for a Healthier South Carolina Member

ALLIANCE MEMBERSHIP SNAPSHOT

62 Total Members

5 New Members

\$180K Member Contributions

Launched a multi-dimensional social media platform to connect and inform members and partners.

Developed and implemented a new leadership team structure to support operations. Secured additional funding and resources to enhance efforts.

Hosted events to build capacity of members and partners. Worked to align efforts and linkage to our strategic plan.

BIG WIN IN 2022.....

\$1.2 MILLION FROM THE DUKE ENDOWMENT

PHASE ONE

Build Data Infrastructure to support work

PHASE TWO

Convene Stakeholders

PHASE THREE

Train Stakeholders on RBA

PHASE FOUR

Implement Clear Impact Tool

The Alliance was awarded \$1.2 million from The Duke Endowment to fund development of a sustainable, statewide infrastructure that helps hospitals and community partners work together more effectively to impact health and social issues. This process builds on the first State Health Assessment (SHA) and State health Improvement Plan (SHIP). In conjunction to the state health assessment many hospitals and community organizations conduct Community Health Needs Assessments (CHNAs) to share information, align resources, and avoid duplication of efforts. The Alliance saw an opportunity to enhance this process and develop a universal survey tool to streamline efforts and create a space to share data.

“The Alliance and its partners propose developing an aligned data collection process, uniform tools and consistent training programs that will allow partners to easily coordinate strategies, measure results, and ensure that the voices of the most vulnerable populations are captured,”

- Monty Robertson,
Alliance Executive Director.



Convening

The purpose of Live Healthy South Carolina (LHSC) is to actively promote and formally commit to support the implementation of the State Health Improvement Plan as our blueprint for creating healthier communities and a healthier state for all.

SC State Health Improvement Plan (SHIP) Priorities



Resilient Children

Build resilience in South Carolina's children through safe and supportive environments.



Chronic Health Conditions

Partners take action to promote healthy lifestyles and environments that prevent chronic conditions.



Behavioral Health

Create a sustainable system of behavioral health care.



Health Care Transformation

Address factors outside of health care that affect health and look through a consumer viewpoint to link primary care, behavioral health, oral health and supports/resources.



Factors that Affect Health

Create safe, livable environments that improve the conditions in which people live, work, play and pray.

5TH ANNUAL LIVE HEALTHY SC MEETING

Showcasing community efforts to improve the health & well-being of South Carolina. Approximately 200 participants gathered on November 1, 2022 to celebrate the successes of Live Healthy SC and honor work partners going above and beyond to make South Carolina a healthier place to live, work, pray, and play.



MAKING SC BETTER!

Live Healthy SC Videos

Chronic Health Conditions – CMD’s Pantry

Healthcare Transformation – Clemson Rural Health

Behavioral Health - Peer Support

Child Resiliency – Family Connections

Factors that Affect Health – Healing Partners



2022 LIVE HEALTHY AWARD WINNERS

Columbia, SC, Nov.1, 2022 – The Alliance for a Healthier South Carolina was pleased to announce the winners of the 2022 Live Healthy SC Awards. These awards recognize organizations and leaders that exemplify the highest levels of commitment to improving the health and wellbeing of the communities they serve.

The **Dr. Rick Foster Leadership Award** recognizes an individual who has served as a champion for health and health equity at a local, regional, or state level. This year’s recipient is **Angel Bourdon**. Angel serves as the Director of Community Health Improvement and Innovation for the South Carolina Hospital Association and leads AccessHealth SC and Healthy People Healthy Carolinas, two state-wide community health improvement efforts.



Angel Bourdon

Recipient of the Dr. Rick Foster Leadership Award

The **Community Innovation Award** recognizes a community coalition or community-based organization that demonstrates active engagement in leading and guiding innovative work for community health improvement and the elimination of health disparities. This year's recipient is **Palmetto Project**. Palmetto Project's mission is to identify innovative strategies to address the social and economic challenges facing our state and put them into action.



Palmetto Project
Recipient of the Community Innovation Award

The **State Impact Award** recognizes a state level organization or coalition that demonstrates a commitment to support and takes action under the Live Healthy plan, using a collaborative approach for state health improvement. This year's recipient is **Health Extension for Diabetes (HED) – Clemson University**. HED is a free education program that offers lessons on chronic disease self-management for people diagnosed with diabetes.



Health Extension for Diabetes
Recipient of the State Impact Award

SHOWCASING SC DATA

SC Department of Health and Environmental Control and the Alliance for a Healthier South Carolina hosted a Data Walk on October 25, 2022 to continue leading this collaborative process using data to drive decisions impacting the health of South Carolinians. The second Data Walk built on the work of the first State Health Assessment (SHA) and State Health Improvement Plan (SHIP) while launching expanded efforts for the second SHA/SHIP process.

This Data Walk:

- Communicated the facts (data) around selected health topics and disparities.
- Promoted discussion and problem-solving
- Raised awareness of the issues to our specific audience
- Can potentially influence policy development
- Made a case for evidence-based initiatives that improve poor health outcomes and health inequities.





Connecting

THE ALLIANCE CONTINUES TO BE A LEADER IN ADVANCING HEALTH EQUITY.

In 2022 we used the Collaborative Strategies for Advancing Health & Racial Equity in South Carolina Plan to enhance leadership capacity to promote diversity, equity, inclusion and health improvement strategies to take collective action at the policy and programmatic levels to eliminate equity-based gaps in health outcomes. We work to connect partners to:

GOAL 1

Build Awareness, Education, & Training

GOAL 2

Provide Equity-Stratified Data for Decision Making

GOAL 3

Support Policy & Systems Changes

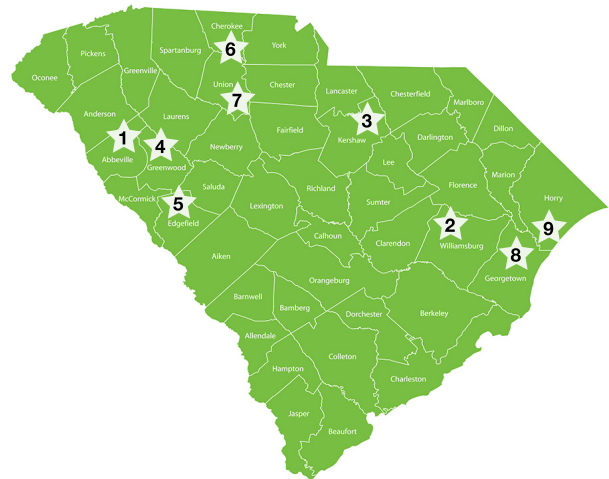
GOAL 4

Build Multi-Sector Collaborations

Rural Hospitals DEI Learning Collaborative

The Alliance and SCHA partnered to develop a learning collaborative for rural-serving SC hospitals to improve their understanding and application of diversity, equity, and inclusion (DEI) practices. The Alliance led the first cohort of 9 participating hospitals through quarterly meetings to launch collaborative efforts and set goals and expectations. A big thank you to all the hospitals and partners that are dedicated to improving the lives of SC's most vulnerable through this project.

1. Abbeville Area Medical Center
2. MUSC Health Williamsburg Regional Hospital
3. MUSC Health Kershaw
4. Self-Regional Healthcare
5. Edgefield County Healthcare
6. Spartanburg Cherokee Medical Center
7. Spartanburg Union Medical Center
8. Tidelands Georgetown Memorial Hospital
9. Tidelands Waccamaw Community Hospital



Catalyze

BE A HEALTH EQUITY CHAMPION

The Alliance created an organizational and individual **Health Equity Champion Pledge** to promote action towards eliminating equity-driven health disparities. The Alliance full membership has rallied behind the Pledge to encourage organizations, and individuals across South Carolina to support the advancement of diversity, equity, and inclusion (DEI) in everything we do! Please join us in taking the pledge to improve health outcomes across the state.

As of December 2022 we have **31 organizations** and **63 individuals** that have taken the pledge and committed to improve the health of South Carolina. **Take the Pledge here!**

TOGETHER WE



Work collaboratively as a convener and connector of diverse stakeholders to support our vision of *A South Carolina with optimal and equitable health for ALL.*



Effectively establish ourselves as a state-level thought leader for health and equity by expanding our diverse membership.



Raise up health improvement work happening in communities across South Carolina to showcase best-practices, lessons learned and promote collaborative connections that build trust.



Communicate efficiently to align partner resources and build capacity that supports health and equity efforts of the Alliance and Live Healthy SC.

How we will make it happen:

- Use Healthy People 2030 as a framework to shape and measure our work.
- Seek Healthy People 2030 Designation
- Build on our Collective Impact Model
- Adopt RBA Model

ALLIANCE FOR A HEALTHIER
SOUTH CAROLINA
CONVENE. CONNECT. CATALYZE.

ALLIANCE FOR A HEALTHIER
SOUTH CAROLINA
CONVENE. CONNECT. CATALYZE.



ALLIANCE FOR A HEALTHIER
SOUTH CAROLINA
CONVENE. CONNECT. CATALYZE.

ALLIANCE FOR A HEALTHIER
SOUTH CAROLINA
CONVENE. CONNECT. CATALYZE.

ALLIANCE FOR A HEALTHIER
SOUTH CAROLINA
CONVENE. CONNECT. CATALYZE.

R



ALLIANCE FOR A HEALTHIER
SOUTH CAROLINA
CONVENE. CONNECT. CATALYZE.

ALLIANCE FOR A HEALTHIER
SOUTH CAROLINA
CONVENE. CONNECT. CATALYZE.

R



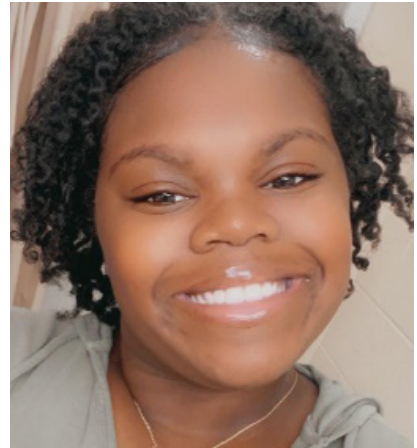
Alliance Staff



Monty Robertson
Executive Director



Barbara Grice
Health Improvement Strategist



Jasmine Thompson
Administrative Coordinator

CONTACT US

Questions about membership?

Monty Robertson,
Executive Director
Mrobertson@scha.org



Thank you to our 2022 Members!

PLATINUM LEVEL



GOLD LEVEL



SILVER LEVEL



BRONZE LEVEL

Able South Carolina
 AnMed Health
 Atrium Health
 Benefits Data Trust
 Bon Secours St. Francis Health System, Inc
 Centene of South Carolina
 Center for Applied Research & Evaluation
 Center for Community Health Alignment
 Children's Trust of South Carolina
 Clemson Rural Health
 Drs Bruce & Lee Foundation
 Edward Via College of Osteopathic Medicine- Carolinas
 Fact Forward

Family Connection of SC
 Furman University Institute for the Advancement of Community Health
 Lexington Medical Center
 March of Dimes
 McLeod Health
 Molina Healthcare of SC
 MUSC Health
 New Morning Foundation
 Palmetto Care Connections
 PASOs Programs
 Roper St. Francis
 SC AHEC
 SC Association of Council on Aging Directors
 SC Association of Health Underwriters

SC Center for Rural & Primary Healthcare
 SC Department on Aging
 SC Department of Disabilities & Special Needs
 SC Department of Health and Human Services
 SC Department of Mental Health
 SC Free Clinic Association
 SC Hospital Association
 Foundation Innovations
 SC Institute of Medicine & Public Health
 SC Medical Association
 SC Nurses Association
 SC Office of Rural Health
 SC Telehealth Alliance

SC Thrive
 Select Health of SC Inc
 Self Regional Healthcare System
 South Carolina Community Health Worker Association
 Special Olympics South Carolina
 The Carolinas Center for Hospice & End of Life Care
 The Carolinas Center for Medical Excellence
 Tidelands Health
 Unite Us
 United Way Association of SC
 University of South Carolina College of Pharmacy
 Wholespire



**ALLIANCE FOR A HEALTHIER
SOUTH CAROLINA**

www.HealthierSC.org
