



# 6<sup>TH</sup> Annual Live Healthy SC Meeting

**RESHAPING TOMORROW  
FOR A HEALTHIER SC**

DECEMBER 7, 2023

**COLUMBIA METROPOLITAN  
CONVENTION CENTER**



HOSTED BY:  
**ALLIANCE FOR A HEALTHIER  
SOUTH CAROLINA**  
CONVENE. CONNECT. CATALYZE.

# CELEBRATING COMMUNITIES ACROSS SOUTH CAROLINA

Thank you for joining us for the 6th Annual Live Healthy SC Meeting! During this celebration, we provide an update on the Live Healthy SC State Health Improvement Plan and State Health Assessment. In addition, we highlight existing health improvement work that supports the health priorities in the SHIP.

## WHAT IS LIVE HEALTHY SC?

Live Healthy South Carolina is a collaborative process led by the Alliance for a Healthier South Carolina and South Carolina Department of Health and Environmental Control to systematically assess and advance the health of all South Carolinians. South Carolina's first comprehensive state health assessment (SHA) and the state health improvement plan (SHIP) were created through this initiative.

View the Live Healthy SC Plan at [www.livehealthy.sc.gov](http://www.livehealthy.sc.gov).



### **Resilient Children**

Build resilience in South Carolina's children through safe and supportive environments.



### **Chronic Health Conditions**

Partners take action to promote healthy lifestyles and environments that prevent chronic conditions.



### **Behavioral Health**

Create a sustainable system of behavioral health care.



### **Health Care Transformation**

Address factors outside of health care that affect health and look through a consumer viewpoint to link primary care, behavioral health, oral health and supports/resources.



### **Factors that Affect Health**

Create safe, livable environments that improve the conditions in which people live, work, pray & play.

## ALLIANCE FOR A HEALTHIER SC

The Alliance for a Healthier South Carolina is a coalition of more than 60 executive leaders from diverse organizations across the state working together to improve the health and well-being of all South Carolinians.

Learn more about the Alliance at [www.healthier.sc.org](http://www.healthier.sc.org).



**RESHAPING  
TOMORROW FOR  
A HEALTHIER SC**

# 6<sup>TH</sup> Annual Live Healthy SC Meeting

DECEMBER 7, 2023 • AGENDA

COLUMBIA METROPOLITAN CONVENTION CENTER

## 8:00 AM REGISTRATION

*Columbia Ballroom AB*

## 9:00 AM WELCOME

*Columbia Ballroom AB*

**Shawn Stinson, MD**  
Senior Vice President, BlueCross BlueShield SC  
Chair, Alliance for a Healthier SC

## 9:15 AM OPENING REMARKS

*Columbia Ballroom AB*

**Monty Robertson, MHA**  
Executive Director, Alliance for a Healthier SC

## 9:30 AM HEALTH CARE TRANSFORMATION

*Columbia Ballroom AB*

### **Don't Forget the Men: Transforming the Ways We Address Men's Health**

**Thaddeus John Bell, MD**  
Medical Doctor, Founder, & CEO,  
Closing the Gap in Healthcare

**Mike Young, MA, CHW**  
Health Equity Consultant, South Carolina  
Community Health Worker Association

**Rebekah Shilling, MS, CHW**  
Program Manager, South Carolina  
Community Health Worker Association

## 10:00 AM CHILD RESILIENCY

*Columbia Ballroom AB*

### **Our Children Are the Future: Innovative Ways of Reaching Our Youth**

**Jamal Stroud, PhD**  
CEO, Big Homie Lil Homie Mentoring

**Brittany Wearing, MPH, CHES**  
Community Investment Manager, Fact Forward

**Katrina James, MPH, CHES**  
Capacity Building Manager, Fact Forward

## 10:30 AM POSTER SESSION & EXHIBITS

*Columbia Ballroom AB*

## 11:00 AM BREAKOUT SESSIONS #1

### **A. Integrating Diabetes and Oral Health into Community Health Educator Activities with Innovative Approaches**

*Carolina A*

**Timothy J. Lyons, MD, FRCP**  
Executive Medical Director, Diabetes Free SC

**Courtney June Wilson, MHSA**  
Community Health Educator, SC DHEC

### **B. Bringing Empathy in Action to Your Community**

*Senate*

**Jessica Seel, MPH**  
Director of Behavioral Health Initiatives & Workforce  
Development, South Carolina Office of Rural Health

**Hannah Hogue, MPH**  
Performance Improvement Specialist,  
South Carolina Office of Rural Health

### **C. Connecting Healthcare and Social Care: Strategies to Address Social Determinants of Health**

*Hall of Fame*

**Stacey Seipel, MSN, RN**  
Director, Value Based Care Coordination,  
Medical University of South Carolina

**Rita Aidoo, LMSW**  
Manager, Community Navigation,  
Medical University of South Carolina

**Beth Franklin**  
Senior Director of Operations, SC Thrive

### **D. Strengthening the Health Care Workforce to Better Serve Communities**

*Carolina B*

**Karen Worthy, PhD, MPH, RN, CNE**  
Associate Professor, University of South Carolina

**Coretta Jenerette, PhD, RN**  
Professor, University of California

**Beth Hercher, CPHQ**  
Project Manager, Constellation Quality Health

**Annlouise Moran, MPH, RN**  
Quality Improvement Specialist

**12:00 PM**  
**LIVE HEALTHY AWARDS LUNCHEON**

*Columbia Ballroom AB*

**1:30 PM**  
**BREAKOUT SESSIONS #2**

**E. Collective Impact in Action:  
State & Local Outcomes**

*Carolina A*

**Angel Bourdon, MHA**  
Director, Community Health & Innovation,  
SC Hospital Association

**Darlene Lynch**  
Senior Director, Community Health Transformation,  
SC Office of Rural Health

**Susan Collier, MS, RD, LDN**  
Community Engagement Director, SC DHEC

**F. Food is Medicine SC: Building Relationships  
between Healthcare Organizations & Food  
Access Partner to Address Nutrition Insecurity**

*Senate*

**Zack King, MPH, MCHES**  
Consultant, DellaRe Consulting

**Amy T. Weaver, MSPH**  
Research Associate, University of South Carolina

**Brooke A. Brittain, MS, RD, LD**  
Associate Director, Clemson University

**G. Together We Can Accomplish More:  
Getting Care to Underserved Communities  
Through Collaboration**

*Hall of Fame*

**Johnese M. Bostic, APM, CLSSGB**  
Manager of Clinical Quality Improvement,  
SC Primary Health Care Association

**Alexis M. Stoner, PhD, MPH**  
Chair for Preventive Medicine and Public Health,  
Associate Professor, VCOM

**Lisa Carroll, MD**  
Chair for Clinical Sciences & Rural Primary Care, VCOM

**Karen Fradua, MS, MCHES**  
Community Partnership Coordinator, SC DHEC

**H. Equitable Healthcare, Able SC's Inclusive  
Vision for South Carolina**

*Carolina B*

**Mandy Halloran**  
Director of Public Health & Disability Integration,  
Able SC

**Dori Tempio**  
Senior Director of Community Education, Able SC

**Wednesday Jones**  
Advocacy & Independent Living Program Assistant,  
Able SC

**2:30 PM**  
**BREAK**  
*Columbia Ballroom AB*

**2:45 PM**  
**CALL TO ACTION**  
*Columbia Ballroom AB*

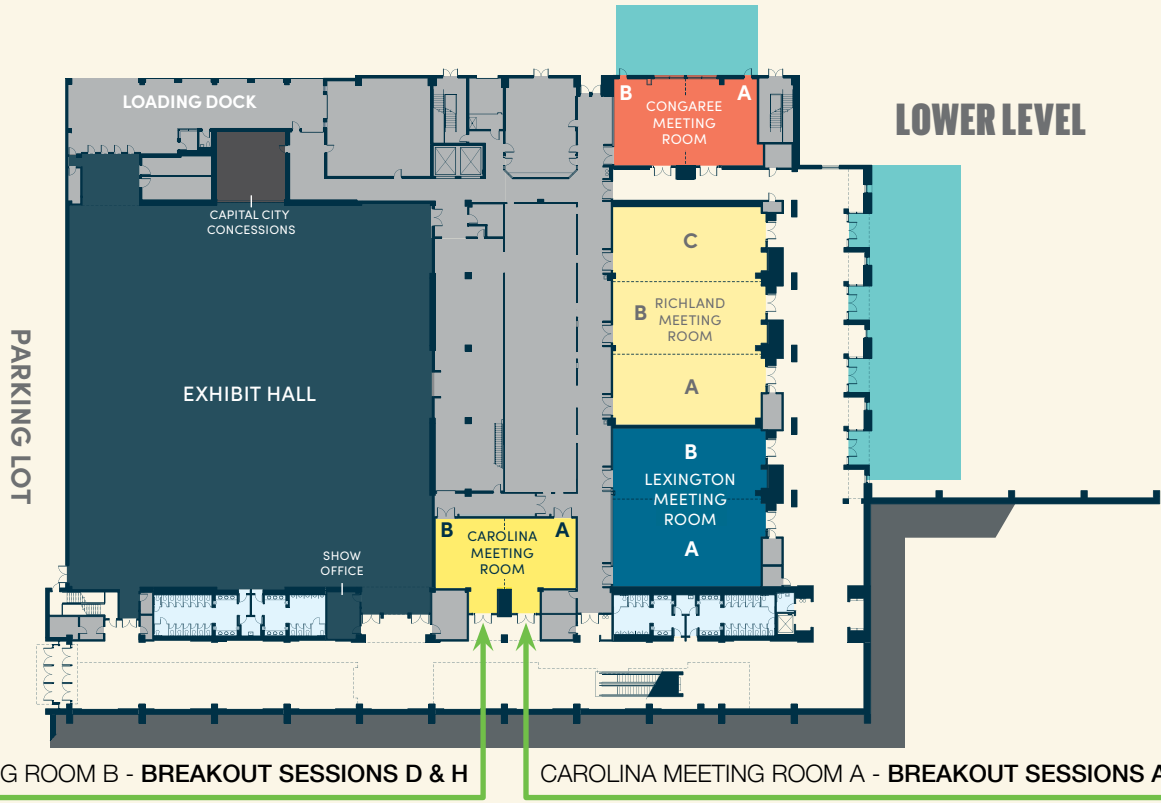
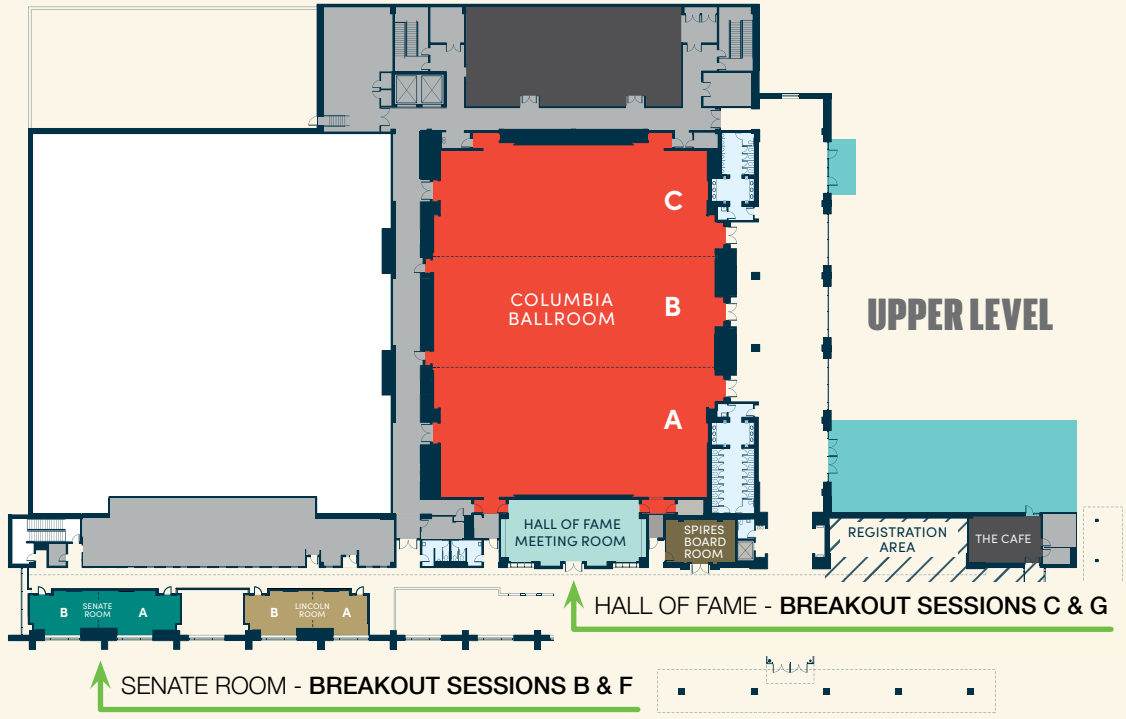
**Edward Simmer MD, MPH, DFAPA**  
Agency Director, SC DHEC

**3:00 PM**  
**CLOSING**  
*Columbia Ballroom AB*

**Marisette Hasan, BSN, RN**  
Vice Chair, Alliance for a Healthier SC

**3:15 PM**  
**ADJOURN**

- BALLROOM
- SENATE ROOM
- KITCHEN/ CONCESSIONS
- LEXINGTON MEETING ROOM
- OUTDOOR SPACE
- SPIRES BOARDROOM
- LINCOLN ROOM
- EXHIBIT HALL
- RICHLAND MEETING ROOM
- PREFUNCTION SPACE
- HALL OF FAME MEETING ROOM
- REGISTRATION AREA
- CAROLINA MEETING ROOM
- CONGAREE MEETING ROOM
- SERVICE
- GUEST SERVICES
- RESTROOMS



# FLOOR PLAN



We work hard to make navigating your health care easier. Because having the right health insurance means not having to think about it. Helping you give every moment the attention it deserves.

**Focus on what matters most. We'll help with the rest.**

**That's the Benefit of Blue®.**



**South Carolina**

BlueCross BlueShield of South Carolina is an independent licensee of the Blue Cross Blue Shield Association.

# Transforming health outcomes in rural and underserved communities.



## CLEMSON RURAL HEALTH

Learn more at [ClemsonRuralHealth.org](http://ClemsonRuralHealth.org) and follow us at [@ClemsonRuralHealth](https://twitter.com/ClemsonRuralHealth)

Molina Healthcare members get what's covered under the Healthy Connections program and more. Here are a few extra benefits eligible Molina members can get for FREE.



No co-pays for any doctor office visit



A \$150 Walmart gift card to purchase a bicycle and helmet after your child completes an 8, 9, or 10 year old well visit.\*



\$10 Walmart gift card when completing well-visit with doctor



Free car seat program for eligible members who complete 6 prenatal visits



Free electric breast pump for qualifying pregnant members



Manage your health care anytime, anywhere with our My Molina mobile phone app



Adults get an eye exam every year plus frames and lenses every 2 years



Mom's Meals - Home delivered meals for pregnant and postpartum mothers who complete a telephonic health screening\*\*

\* One per lifetime benefit  
\*\* Up to 3 weeks of meals

### Questions?

To learn more about Molina's benefits and services, call: [\(877\) 385-3884](tel:877-385-3884)

If you'd like to become a Molina member, call Healthy Connections Choices: [\(877\) 552-4642](tel:877-552-4642)

29848FLYMDSCEN  
221112 V.2



# Be well.



LEXINGTON  
MEDICAL CENTER

[LexMed.com/Doctors](http://LexMed.com/Doctors)



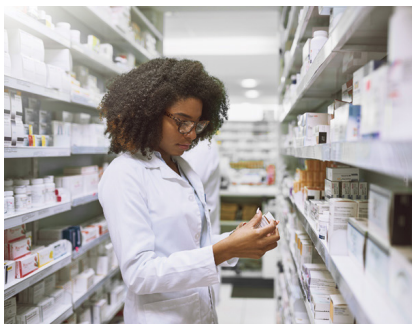


# RITEDOSE

Ten billion doses. Zero doubts.

Living healthy means living with confidence. It's why our purpose goes far beyond our products and lies in the certainty that they'll be in stock, on schedule and to caregiver's specifications every single time.

We salute all those working just as hard to bring greater health and well-being to South Carolinians.



From our headquarters in Columbia, Ritedose manufactures life-changing medicines that help patients and clinicians breathe easier. For 27 years we've worked with hospitals in this community and across the country to ensure iron-clad supply chains and reliable inventories.



# RITEDOSE

CDMO | PHARMACEUTICALS | 503B

[www.ritedose.com](http://www.ritedose.com)

# SCHA

SC HOSPITAL ASSOCIATION



96 Facilities  
77,000 Employees  
\$29B Economic Impact

Together, we are building  
a better state of health.

Learn more at [scha.org](http://scha.org)



@scphca



**"ACCESS TO  
QUALITY HEALTH  
CARE FOR ALL OF  
SOUTH CAROLINA"**

## About Us

The South Carolina Primary Health Care Association (SCPHCA) is a 501(c)(3) membership organization that represents South Carolina's community health centers, which are an integral part of the primary health care system. The community health centers serve over 400,000 patients annually. The community health centers also deliver high quality primary health, behavioral health, substance use disorder treatment, pharmacy services and dental care to patients based on need while reducing inappropriate emergency room usage, overall health care costs, racial and ethnic health disparities, and other barriers to care.

### CONTACT US

803.788.2778

information@scphca.org

scphca.org

3 Technology Circle, Columbia, SC 29203

**PRISMA**  
HEALTH®

Prisma Health offers even

# MORE

ways to help you be your healthiest you

With more locations, greater access, more specialists and advanced technology that are all close to home, we're here to provide the care you need when you need it.

As a nonprofit and South Carolina's largest healthcare employer, we offer the most comprehensive services available to you and your family. We have a strong legacy of care, innovation and education, all inspired by you. At Prisma Health, we're doing even more to help you be your healthiest you.

Find a physician who's right for you at  
[PrismaHealth.org/FindAPhysician](https://PrismaHealth.org/FindAPhysician)

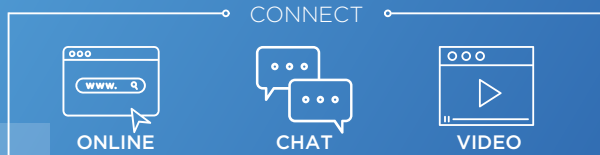


[www.NEWBERRYHOSPITAL.org](http://www.NEWBERRYHOSPITAL.org)



### MEDICAL CARE ON YOUR SCHEDULE.

VIRTUAL CARE IS FAST, CONVENIENT AND AFFORDABLE.



No appointment needed.  
Costs as low as \$19.

Visit [Go.SRHS.com/VirtualCare](https://Go.SRHS.com/VirtualCare)  
to start your visit today.



Spartanburg Regional  
Healthcare System



# Constellation Quality Health

*Formerly, The Carolinas Center for Medical Excellence (CCME)*

## Welcome to the 6th Annual Live Healthy SC Meeting!

The Constellation Quality Health team thanks you for the inspiring work you do to improve the quality of health care in our communities. As your Quality Improvement partner for 40 years, we are honored to work alongside you on initiatives that support quality improvement and equitable health across South Carolina. May you enjoy your time today and discover new connections, best practices, and opportunities to make South Carolina an exemplary place to live – one where all people receive the health care they need, 100 percent of the time.



Steven B. Martin, MHA, CPHQ, FACHE  
President & CEO, Constellation Quality Health

### Constellation Quality Health Has Deep Ties to the Health Care Industry in South Carolina:

- ✦ Since 1988, our quality improvement work with providers has focused on localized data-driven solutions to national improvement priorities. More than 1,400 providers engage in the quality improvement program to:
  - Make care safer and reduce patient harm.
  - Improve the quality of life for people with chronic diseases.
  - Improve system performance that impacts health care funding and patient outcomes.
- ✦ Since 1996, we have served as the External Quality Reviewer for SC DHHS, along with Medicaid programs in North Carolina and Mississippi, to identify gaps in system delivery and provide the necessary tools to take action.

**We also offer full spectrum Fraud, Waste, and Abuse Solutions and Quality Consulting Services for state programs. To learn how we can partner, connect with Chris Aiello, Senior Director of Business Development:**

# CAREERS

## at DHEC

Embracing  
Service

Inspiring Innovation

Promoting Teamwork

Pursuing Excellence

Advancing  
Equity

### BENEFITS at a glance:

- Comprehensive health, dental, vision, and voluntary insurance benefits
- Life and long-term disability insurance
- State pension and retirement savings programs
- Paid holidays for full-time employees
- Paid parental leave
- Competitive paid time off and sick days
- Health and wellness programs
- Professional development and training
- Office locations across the state
- Work with leaders in health and environmental fields
- Work-life balance

### FREQUENTLY posted jobs:

- Nutritionists
- IT Professionals
- Nurses
- Administrative
- Chemists & Lab Scientists
- Business & Finance
- Engineers
- Environmental Health Managers
- Public Health Professionals
- Counseling & Social Work
- Attorney & Legal Professionals
- Managers
- Healthcare Support & Health Inspectors

 [scdhec.gov/CAREERS](https://scdhec.gov/CAREERS)



# Well Ahead

Advanced Medical Services

There will be times in life when you need medical attention. At McLeod Health, you can trust our expert care and advanced services that surpass the bounds of ordinary healthcare.

**McLeod Health**

# Committed to Health Equity in the Lakelands



**SELF REGIONAL**  
HEALTHCARE

1325 Spring St., Greenwood, S.C. 29646 • (864) 725-4111  
[selfregional.org](http://selfregional.org)



CENTER FOR  
**COMMUNITY HEALTH**  
ALIGNMENT

[communityhealthalignment.org](http://communityhealthalignment.org)

<p>Collectively asset-focused Collaboration Self-determination Confidence</p>	<p><b>Nothing About Us, Without Us</b></p> <p>Led by CHWs for CHWs with support from close allies!</p>
<p><b>CHW Technical Assistance</b></p> <p>Best practices for program implementation</p>	
<p><b>CHW Core Competency and Specialties</b></p> <p>Chronic Disease Perinatal Health Supervisor Health &amp; Racial Equity and more!</p>	
<p><b>CHW Leadership Development</b></p> <p>Professional growth for CHWs to grow our skills and careers</p>	
	<p><b>Showing CHW Impact</b></p> <p>CHW-led research and evaluation capacity development</p>



**IDEA**  
Inclusion, Diversity, Equity and Access

## WHAT CAN A REGISTERED DIETITIAN DO FOR YOU?

### HOW RD SERVICES ADD VALUE TO HEALTHCARE ORGANIZATIONS




- 1 Medical Nutrition Therapy (MNT) provided by RDs improves patient outcomes, quality of life and lowers health-care costs.
- 2 Doctor-referred nutrition care structured with RDs can increase satisfaction levels with decreased hospitalizations and reduced prescription drug use.
- 3 RDs provide a nutrition assessment, determine the nutrition diagnosis, implement a nutrition intervention, then monitor and evaluate the patient's progress in subsequent visits.
- 4 The nutrition education for disease prevention and nutrition counseling for chronic conditions that RDs deliver over a series of visits are essential components of a comprehensive health care program.
- 5 Corporate and employee wellness programs trust nutrition counseling and dietary surveillance as effective preventative care measures.

The mission of the SCAND-IDEA Committee is to expand our career field with underrepresented groups to better serve all populations. This enables us to assess and respond more appropriately to the vast health disparities in South Carolina.

The Academy encourages inclusion, diversity, equity and access (IDEA) by striving to recognize, respect and include differences in ability, age, creed, culture, ethnicity, gender, gender identity, political affiliation, race, religion, sexual orientation, size, and socioeconomic characteristics in the nutrition and dietetics profession.





**Curious  
about your  
risk for high  
cholesterol?**

Scan the code to enroll and receive  
your **NO COST** at-home DNA  
test kit



Take action at

**InOur  
DNASC.org**

A Community Health Research Project



**Your First Choice**

Helping people get care, stay well, and  
build healthy communities since 1995.

Find us on  &   
[@firstchoicebyselecthealth](https://www.facebook.com/firstchoicebyselecthealth)

**FirstChoice**<sup>SM</sup>  
by Select Health of South Carolina  
FAMILY OF HEALTH PLANS

[www.selecthealthofsc.com](http://www.selecthealthofsc.com)  
1-888-276-2020

© 2020 Select Health of South Carolina. All rights reserved. Select Health of South Carolina is a service mark of Select Health of South Carolina.



SAVE THE DATE

6TH ANNUAL SOUTH CAROLINA  
**Health Equity Summit**

APRIL 11, 2024

DOUBLETREE BY HILTON HOTEL COLUMBIA  
2100 BUSH RIVER ROAD, COLUMBIA, SC, 29210





# THANK YOU TO OUR SPONSORS!

PARTNER SPONSORS



TITLE SPONSORS



PREMIER SPONSORS



SUPPORTER SPONSORS

